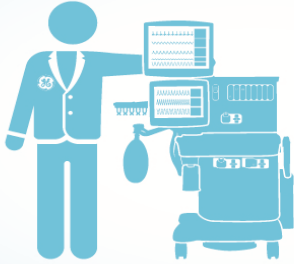
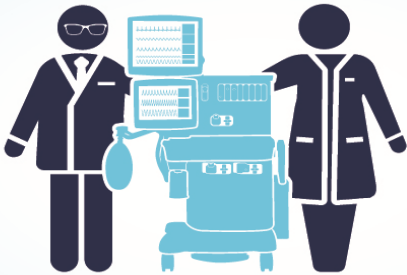


The Patient's Journey Through Anesthesia and Respiratory Monitoring



GE Healthcare's expansive suite of anesthesia and monitoring equipment enable clinicians to tailor anesthetic drug delivery to **optimize the patient experience** and **maximize safety**.

No one understands the innovative GE technology better than we do, which is why our entire portfolio of **GE clinical accessories** is designed or selected by the people who make the devices themselves.



Clinical Accessories such as **AMSORB™ Plus CO₂ absorbent**, **Entropy™ NMT** and **respiratory monitoring** are here to support your anesthesia and monitoring accessory needs.



When it matters most, choose **GE Clinical Accessories** to connect the patients you care for, to the equipment you trust.



Trusted. Reliable. Simple.

JB16260XX