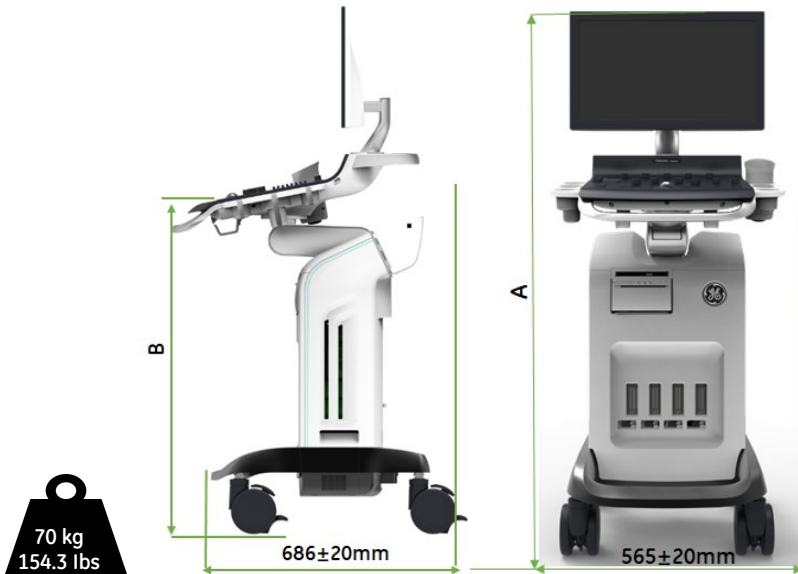


Versana Balance

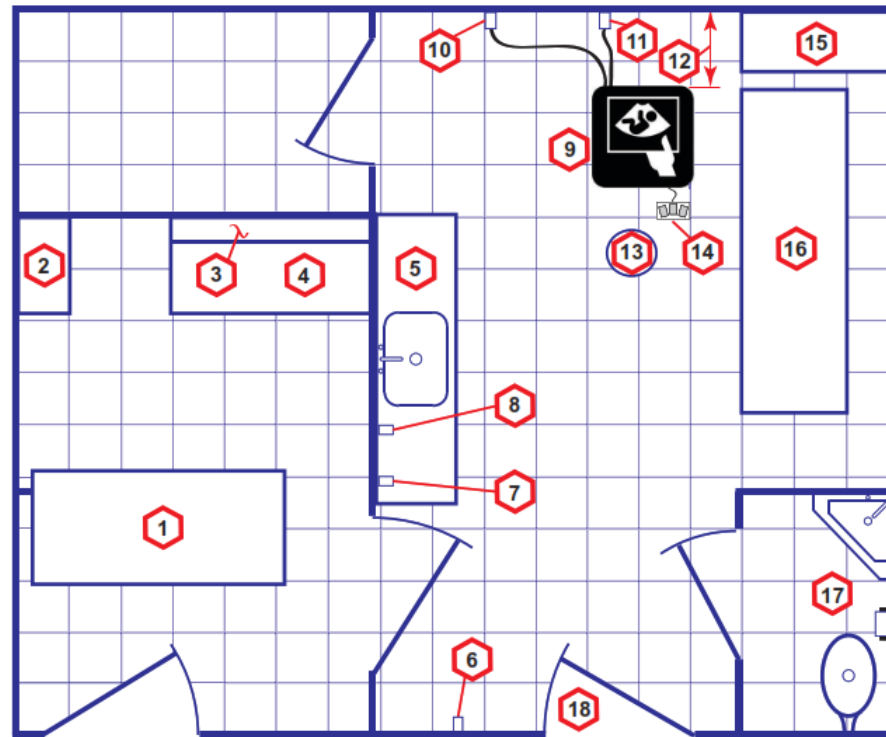
Physical Dimensions and Weight :

Please Note: The picture may vary according to order configuration.

	Fix Neck +17.3 LCD	Adjustable +17.3 LCD	Adjustable +21.5 LCD
A	1365±30mm	(1355~1495 ±30mm)	(1390~1530)±30mm
B	870±30mm	(860~1000)±30mm	



Recommended Ultrasound Room Layout 4.27 x 5.18 m (14 x 17 foot)



1. Secretaries or Doctors Desk
2. File Cabinet
3. Film Viewer
4. Counter Top
5. Counter Top and Sink with hot and cold water
6. Overhead Lights Dimmer - Dual Level Lighting (bright and dim)
7. Emergency Oxygen
8. Suction Line
9. Ultrasound system
10. Dedicated Power Outlet - Circuit Breaker protected and easily accessible
11. Network Interface
12. 457 mm (18 inches) distance of Ultrasound system from wall or objects
13. Stool
14. Footswitch
15. Storage for Linens and Equipment
16. Examination Table - 1930 x 610 mm (76 x 24 inches)
17. Lavatory and Dressing Room
18. Door - at least 762 mm (30 inches)

External Inputs and Outputs :



Environmental Requirements

Operating Temperature	3 to 40 C (38 to 104 F)
Operating Humidity	30 to 80 % rH, non-condensing , Pressure : 700 -1060 hPa
Heat Dissipation	3800 BTU/hour + 300 Btu for each person. Without lights, other equipment etc.
Storage Temperature	-5 to 50 C (-23 to 122 F) ,
Storage Humidity	10 % - 90 % rH, non-condensing , Pressure : 700 -1060 hPa Combination lighting system (dim/bright) is recommended. Keep in mind that lighting controls and dimmers can be a source of EMI which could degrade image quality.
Lighting	

Electrical Specifications

Voltage	100-240 VAC ±10% 50/60 Hz
Power Consumption	Max 350 VA Working :130 VA, Standby :110 VA Working + Battery charge :170 VA
Site Power Outlets	A dedicated AC power outlet must be within reach of the unit without extension cords
Power outage may occur	Requires a dedicated single branch circuit. To avoid circuit overload and possible loss of critical care equipment, make sure you DO NOT have any other equipment operating on the same circuit.
Acoustic Noise output	42 dB(A)

Please Note: For more information please refer to the product's service & user manuals.