



# Q.SUV™

## Quantitative SUV you and your patients can trust

### Revolutionary Q.Clear Technology

The major clinical applications of PET are cancer staging (“find disease”) and treatment response assessment (“follow disease”). To find disease, image quality is important. To follow it, we need accurate and consistent quantitation.

Conventional reconstruction technologies designed to improve PET image quality are a key limiting factor of quantitation accuracy. In other words, the ability to find limits the ability to follow.

GE Healthcare’s exclusive Q.Clear technology offers up to 2x improvement in both image quality and quantitation accuracy. No trade-off between quantitation and image quality provides optimal conditions for both detectability of smaller lesions and longitudinal scan comparison.

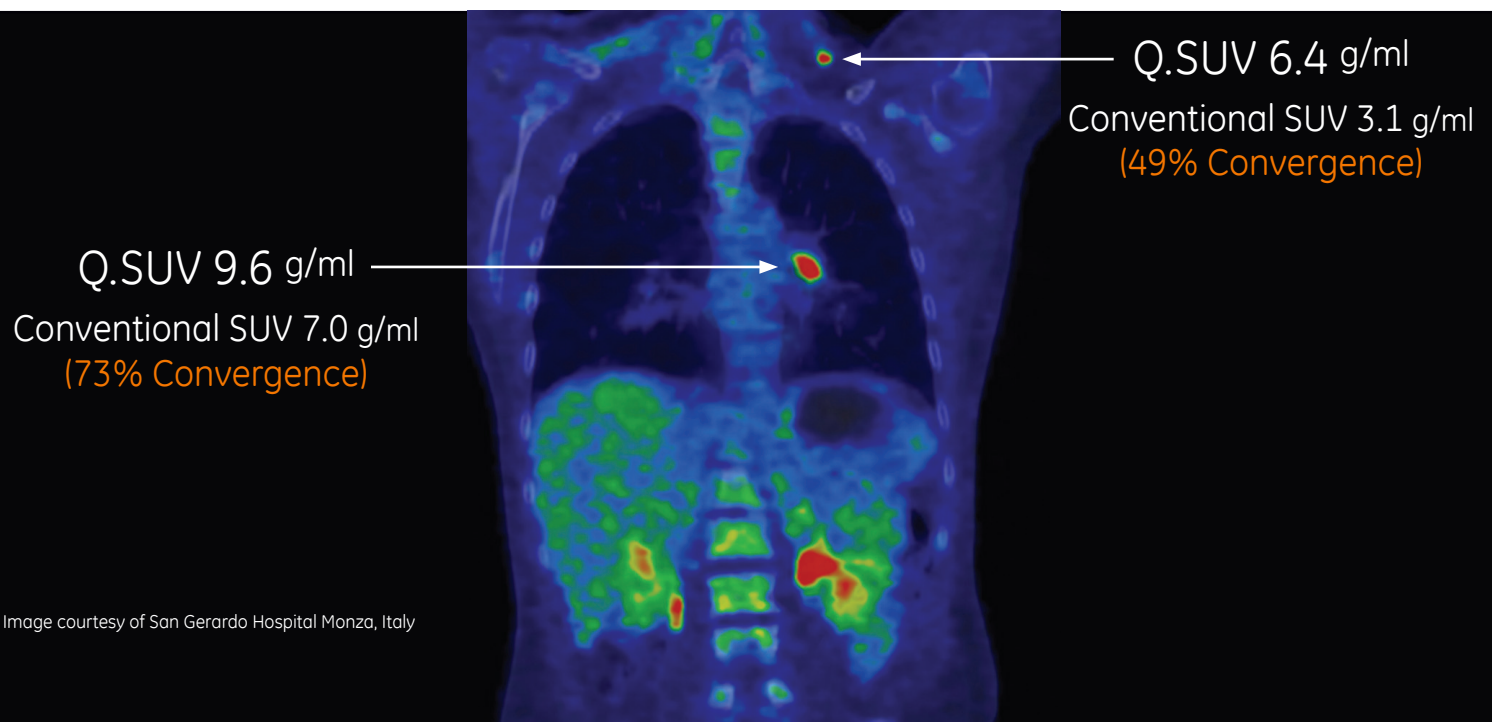
### Introducing: Q.SUV

In PET, SUV quantitation is a communication language between imaging and referring physicians. The SUV accuracy defines how clear this language is.

While conventional SUVs are under converged, SUVs delivered by Q.Clear are fully converged, hence more accurate and more consistent. This must be clearly communicated to reading and referring physicians that will look at the PET scan.

Q.SUV is the SUV obtained from Q.Clear reconstruction. The Q tag informs physicians that the quantitation data is more accurate and consistent than conventional methods.

Q.SUV is part of our journey to make PET a great tool to help clinicians find and follow disease efficiently and consistently.





## About GE Healthcare

GE Healthcare provides transformational medical technologies and services to meet the demand for increased access, enhanced quality and more affordable healthcare around the world. GE (NYSE: GE) works on things that matter - great people and technologies taking on tough challenges. From medical imaging, software & IT, patient monitoring and diagnostics to drug discovery, biopharmaceutical manufacturing technologies and performance improvement solutions, GE Healthcare helps medical professionals deliver great healthcare to their patients.

GE Healthcare  
3000 North Grandview Blvd  
Waukesha, WI 53188  
USA  
[www.gehealthcare.com](http://www.gehealthcare.com)

## Imagination at work

©2014 General Electric Company - All rights reserved.

General Electric Company reserves the right to make changes in specification and features shown herein, or discontinue the product described at any time without notice or obligation.

GE, GE Monogram and Imagination at work are trademarks of General Electric Company.

GE Healthcare, a division of General Electric Company.

JB26037XX(1)